

Lord of Glory You Have Bought Us

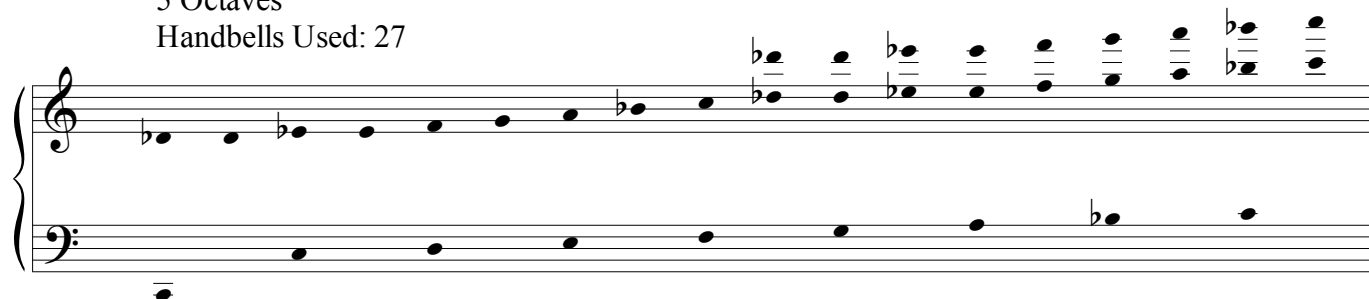
HANDBELLS

Hyfrydol

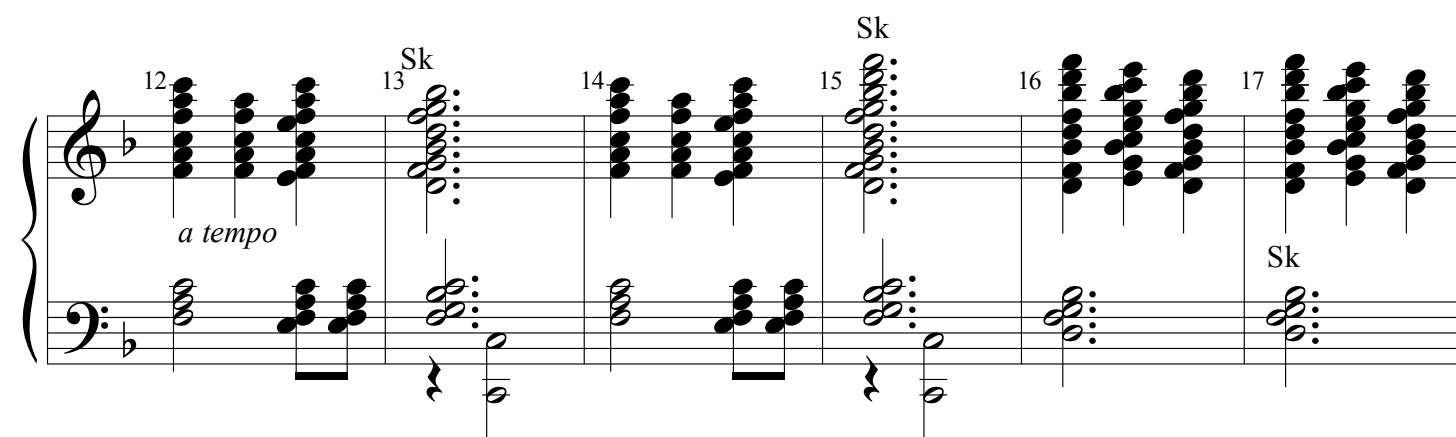
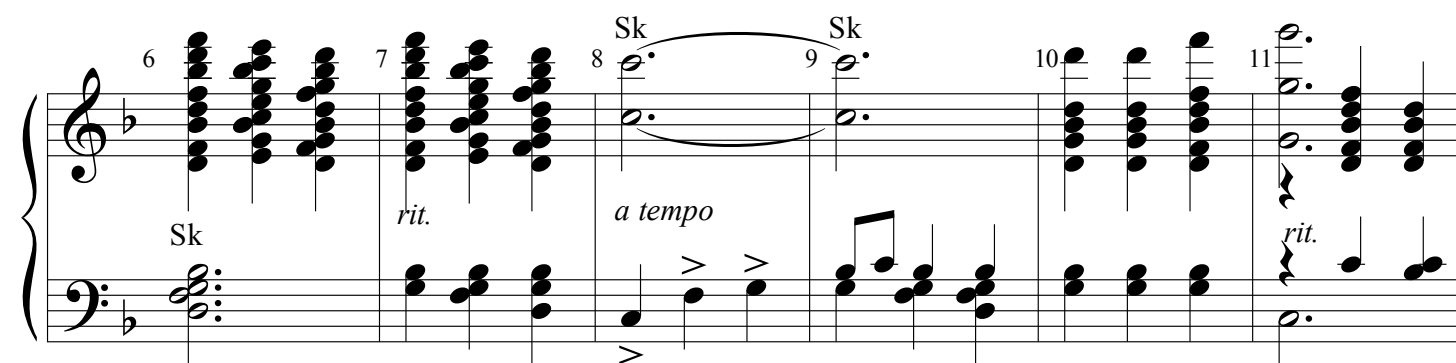
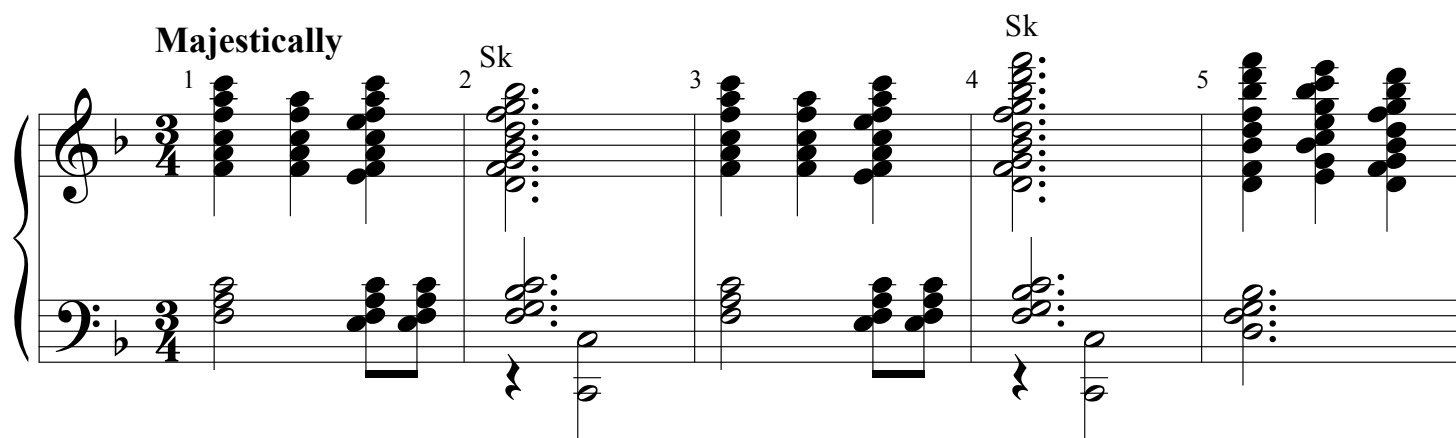
Paul Scheiderer

5 Octaves

Handbells Used: 27



Majestically



Lord of Glory You Have Bought Us

Measures 18-22 of the musical score. Measure 18 is marked *rit.*. Measures 19 and 20 are marked *a tempo* and feature a long melisma labeled "Sk" with a slur over the notes. Measure 21 continues the *a tempo* section. Measure 22 is marked *rit.* and features a melisma labeled "Sk".

Measures 23-27 of the musical score. Measure 24 is marked *NR(Db)*. Measures 25-27 continue the *a tempo* section.

**All Notes Shake from Measure 25 - 28

Measures 28-30 of the musical score. Measure 28 is marked *rit.*. Measures 29 and 30 continue the *rit.* section.

Measures 31-36 of the musical score. Measure 31 is marked *a tempo*. Measures 32-36 continue the *a tempo* section.

37 38 39 40 41 42

Measures 37-42: Treble and bass staves. Treble clef, key signature of one flat (B-flat). Measure 37: Treble has a half note G4 and a half note F4; bass has a half note G2 and a half note F2. Measure 38: Treble has a half note E4; bass has a half note G2 and a half note F2. Measure 39: Treble has a half note D4; bass has a half note G2 and a half note F2. Measure 40: Treble has a half note C4; bass has a half note G2 and a half note F2. Measure 41: Treble has a half note B3; bass has a half note G2 and a half note F2. Measure 42: Treble has a half note A3; bass has a half note G2 and a half note F2.

43 44 45 46 47 48

Measures 43-48: Treble and bass staves. Treble clef, key signature of one flat (B-flat). Measure 43: Treble has a half note G4 and a half note F4; bass has a half note G2 and a half note F2. Measure 44: Treble has a half note E4; bass has a half note G2 and a half note F2. Measure 45: Treble has a half note D4; bass has a half note G2 and a half note F2. Measure 46: Treble has a half note C4; bass has a half note G2 and a half note F2. Measure 47: Treble has a half note B3; bass has a half note G2 and a half note F2. Measure 48: Treble has a half note A3; bass has a half note G2 and a half note F2.

49 50 51 52 53

Measures 49-53: Treble and bass staves. Treble clef, key signature of one flat (B-flat). Measure 49: Treble has a half note G4 and a half note F4; bass has a half note G2 and a half note F2. Measure 50: Treble has a half note E4; bass has a half note G2 and a half note F2. Measure 51: Treble has a half note D4; bass has a half note G2 and a half note F2. Measure 52: Treble has a half note C4; bass has a half note G2 and a half note F2. Measure 53: Treble has a half note B3; bass has a half note G2 and a half note F2.

54 55 56 57 58

Measures 54-58: Treble and bass staves. Treble clef, key signature of one flat (B-flat). Measure 54: Treble has a half note G4 and a half note F4; bass has a half note G2 and a half note F2. Measure 55: Treble has a half note E4; bass has a half note G2 and a half note F2. Measure 56: Treble has a half note D4; bass has a half note G2 and a half note F2. Measure 57: Treble has a half note C4; bass has a half note G2 and a half note F2. Measure 58: Treble has a half note B3; bass has a half note G2 and a half note F2.

Lord of Glory You Have Bought Us

Measures 59-63. Treble and bass staves. Measure 59: Treble has a whole note chord (F4, A4, C5), bass has a whole note chord (F3, A2, C3). Measure 60: Treble has a whole note chord (F4, A4, C5), bass has a whole note chord (F3, A2, C3). Measure 61: Treble has a whole note chord (F4, A4, C5), bass has a whole note chord (F3, A2, C3). Measure 62: Treble has a whole note chord (F4, A4, C5), bass has a whole note chord (F3, A2, C3). Measure 63: Treble has a whole note chord (F4, A4, C5), bass has a whole note chord (F3, A2, C3). The word "Sk" is written above measure 63.

Measures 64-68. Treble and bass staves. Measure 64: Treble has a whole note chord (F4, A4, C5), bass has a whole note chord (F3, A2, C3). Measure 65: Treble has a whole note chord (F4, A4, C5), bass has a whole note chord (F3, A2, C3). Measure 66: Treble has a whole note chord (F4, A4, C5), bass has a whole note chord (F3, A2, C3). Measure 67: Treble has a whole note chord (F4, A4, C5), bass has a whole note chord (F3, A2, C3). Measure 68: Treble has a whole note chord (F4, A4, C5), bass has a whole note chord (F3, A2, C3). The word "Sk" is written above measure 65, and "rit." is written below measure 68.

Measures 69-73. Treble and bass staves. Measure 69: Treble has a whole note chord (F4, A4, C5), bass has a whole note chord (F3, A2, C3). Measure 70: Treble has a whole note chord (F4, A4, C5), bass has a whole note chord (F3, A2, C3). Measure 71: Treble has a whole note chord (F4, A4, C5), bass has a whole note chord (F3, A2, C3). Measure 72: Treble has a whole note chord (F4, A4, C5), bass has a whole note chord (F3, A2, C3). Measure 73: Treble has a whole note chord (F4, A4, C5), bass has a whole note chord (F3, A2, C3). The word "Sk" is written above measure 69, "a tempo" is written below measure 69, and "Sk" is written below measure 72.

Measures 74-78. Treble and bass staves. Measure 74: Treble has a whole note chord (F4, A4, C5), bass has a whole note chord (F3, A2, C3). Measure 75: Treble has a whole note chord (F4, A4, C5), bass has a whole note chord (F3, A2, C3). Measure 76: Treble has a whole note chord (F4, A4, C5), bass has a whole note chord (F3, A2, C3). Measure 77: Treble has a whole note chord (F4, A4, C5), bass has a whole note chord (F3, A2, C3). Measure 78: Treble has a whole note chord (F4, A4, C5), bass has a whole note chord (F3, A2, C3). The word "Sk" is written below measure 76, and "Sk" is written below measure 77.

Measures 79-82. The score is in G major (one sharp) and 4/4 time. Measure 79 features a treble clef with a whole note chord (G4, B4, D5) and a bass clef with a whole note chord (G2, B1, D2). Measure 80 has a treble clef with a whole note chord (G4, B4, D5) and a bass clef with a whole note chord (G2, B1, D2). Measure 81 has a treble clef with a whole note chord (G4, B4, D5) and a bass clef with a whole note chord (G2, B1, D2). Measure 82 has a treble clef with a whole note chord (G4, B4, D5) and a bass clef with a whole note chord (G2, B1, D2). The word "Sk" is written below the bass clef in measure 80.

Measures 83-86. The score is in G major (one sharp) and 4/4 time. Measure 83 features a treble clef with a whole note chord (G4, B4, D5) and a bass clef with a whole note chord (G2, B1, D2). Measure 84 has a treble clef with a whole note chord (G4, B4, D5) and a bass clef with a whole note chord (G2, B1, D2). Measure 85 has a treble clef with a whole note chord (G4, B4, D5) and a bass clef with a whole note chord (G2, B1, D2). Measure 86 has a treble clef with a whole note chord (G4, B4, D5) and a bass clef with a whole note chord (G2, B1, D2). The word "Sk" is written below the bass clef in measures 84 and 85.

Measures 87-90. The score is in G major (one sharp) and 4/4 time. Measure 87 features a treble clef with a whole note chord (G4, B4, D5) and a bass clef with a whole note chord (G2, B1, D2). Measure 88 has a treble clef with a whole note chord (G4, B4, D5) and a bass clef with a whole note chord (G2, B1, D2). Measure 89 has a treble clef with a whole note chord (G4, B4, D5) and a bass clef with a whole note chord (G2, B1, D2). Measure 90 has a treble clef with a whole note chord (G4, B4, D5) and a bass clef with a whole note chord (G2, B1, D2). The word "Sk" is written below the bass clef in measure 88.

Measures 91-94. The score is in G major (one sharp) and 4/4 time. Measure 91 features a treble clef with a whole note chord (G4, B4, D5) and a bass clef with a whole note chord (G2, B1, D2). Measure 92 has a treble clef with a whole note chord (G4, B4, D5) and a bass clef with a whole note chord (G2, B1, D2). Measure 93 has a treble clef with a whole note chord (G4, B4, D5) and a bass clef with a whole note chord (G2, B1, D2). Measure 94 has a treble clef with a whole note chord (G4, B4, D5) and a bass clef with a whole note chord (G2, B1, D2). The word "Sk" is written below the bass clef in measures 91 and 92.

95 96 97 98

99 100 101 102

103 104 105 106

**Shake all bells from 116-119

107 108 109 110

rit. *a tempo*

111 112 113 114

115 Sk 116 117 Sk 118

119 120

121 122 123